

WSSA Announces New Relay Rules

Effective March 12th, 2011

As part of our continuing effort to improve judging and the competitive experience for stackers, the WSSA is announcing...

Three new rule changes for relay races:

1. The **start line** is moved back, further away from the table, by 2 feet (0,60 meters). The new start line is set at **7 feet (2.13 meters)**. (see Figures 1 and 2)
2. **Hand tags** are no longer required in relay races. Instead, the **waiting stacker** must remain behind the start line with both feet on the floor until one foot of the **returning stacker** touches down, on or over the start line. (see Figures 3, 4 and 5)
3. During a **Timed 3-6-3 Relay**, **waiting** and **returning** stackers cannot cross onto or over the **centerline in the backcourt**. (see Figure 9)

For more detailed information, see the updated [WSSA Rule Book](#) (version 6.2).

These new rules will:

1. **Simplify the judging** of a relay race because judges no longer need to try to watch both feet and hands during hand tags. They only need to watch foot positions.
2. Allow a **single video camera** to capture both the **stacking at the table** and the **waiting and returning stackers feet at the start line** for records verification and online viewing;
3. Add **more movement** into a relay race by moving the start line back

How do these new rules affect Records?

The WSSA recognizes that competition in the Timed 3-6-3 Relay under the new rules will not be comparable to records set under the old rules. Therefore, all of the current records will be retired. State, Provincial, National and World records set **on or after March 12, 2011** will be considered **new records** set under the new rules.

In addition, The WSSA has also issued new rules for the Sport Stacking Court set-up and Judge and Camera placement:

1. For the **Timed 3-6-3 Relay Prelims** (see Figure 6) and the **preliminary matches in the H-T-H Relays** (see Figure 7), where only one **judge per team** is required, we've moved the Judge from a sitting position in front of the table to a **standing position on the side of the table** (behind the Tournament Display). This allows the judge to watch both the **stacking on the table** and the **foot positions** at the start line. (Note that there are no changes in the Judge positions during **semi-final** and **final matches of H-T-H Relays** where each team requires a **Judge** sitting in front of the table and a **Line Judge** standing at the start line. See Figure 8)

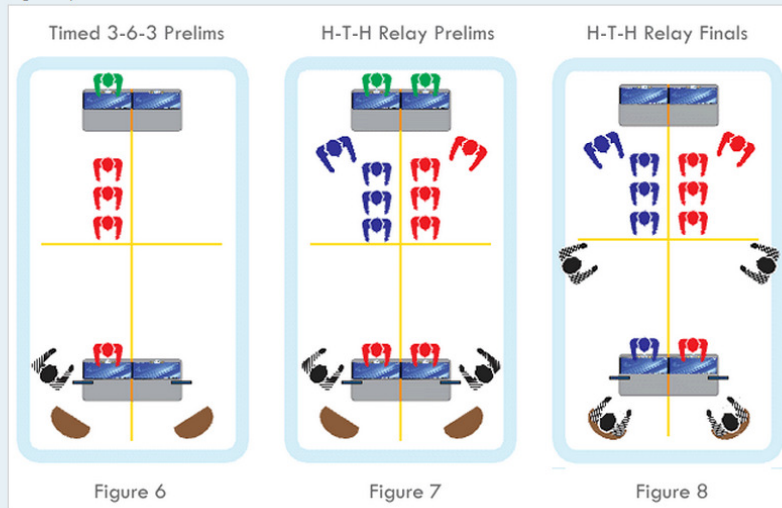
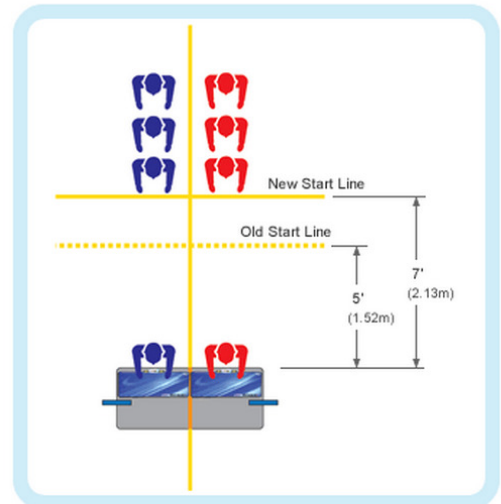


Figure 6

Figure 7

Figure 8

Figure 1



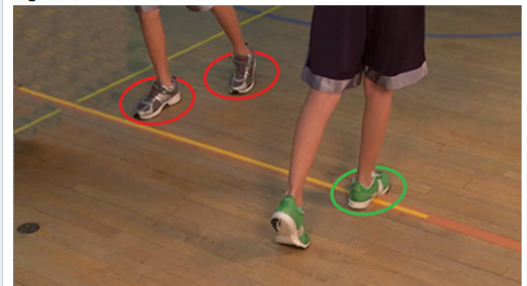
New Relay Start Line

Figure 2



The start line has been moved back from 5 feet (1.52 m) to 7 feet (2.13 m)

Figure 3



Foot Positions. The waiting stacker (red circles) must remain behind the start line with both feet on the floor until one foot of the returning stacker (green circle) touches down, on or over the start line.

Figure 4



Good Start – No Infraction. Both of the waiting stacker's feet are still on the floor when the returning stacker's foot touches the floor on or over the start line.

- For the **Timed 3-6-3 Relay Finals** (see Figure 9), **two judges (Head Judge - sitting, and Line Judge - standing)** are still required as before but the **camera** is now placed in a new position so it can capture both the **stacking** at the table and the **foot positions** at the start line. The camera is placed on an angle about 5 feet out and 4 feet over, on a diagonal from the corner of the table on the same side with the StackMat. **The view of the camera** (see Figure 10) must capture a full view of the Stacker from the top of their head to the top of the table, including the Stacker's face and hands, the surface of the StackMat, table top and Tournament Display. The camera view must also capture a full view of the Waiting Stacker with both feet in contact with the floor. It must also capture the start line, the backcourt centerline and the Returning Stacker as they cross the start line.
- For the **Timed 3-6-3 Relay Finals** the entire **centerline** 19 feet (5.79 m) and **start line** 11 feet (3.35 m) must be taped on the court and the **StackMat** must be butted up to the side edge of the table (see Figure 11). This is important for the ability of the camera to capture all the things described above.

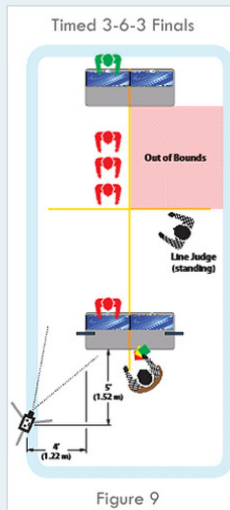


Figure 9

Figure 5



Bad Start – Infraction. One of the waiting stacker's feet has already left the floor when the returning stacker's foot touches the floor on or over the start line.

Figure 10



Proper view of the camera for the Timed 3-6-3 Relay Finals.

Figure 11



Proper StackMat placement on the table and court fully lined out for the Timed 3-6-3 Relay Finals.